

THANK YOU FOR CHOOSING FRONTIER HOME HEALTH AND HOSPICE!

Our experienced home health and hospice team is committed to providing compassionate, quality care, with integrity and dignity, by focusing on your unique needs and goals. We collaborate with you, your family and your physician to develop an individualized plan of care that we provide in the comfort and convenience of your own home. Together we bring a very special kind of care into every patient's life and the lives of those they love.



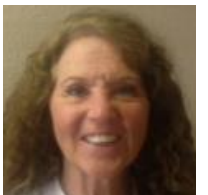
Raymond Adams, MD
Medical Director



Troy Jones, MD
Associate Medical Director



Shelley G., RN
Administrator/
Clinical Manager



Lynda K., RN
Clinical Supervisor
Home Health/
Hospice



Peg P., RN
Clinical Supervisor
Grant/Waiver



Barb S., RN
Clinical Supervisor
Home Health/
Hospice

FRONTIER HOME HEALTH AND HOSPICE

Wyoming:

Frontier Home Health and Hospice—Casper
p. 307-234-6684 | f. 307-234-6066
Casper@frontierhhh.com
Converse and Natrona Counties

Frontier Home Health and Hospice—Cheyenne
p. 307-634-5970 | f. 307-634-5384
Cheyenne@frontierhhh.com
Laramie County

**Frontier Home Health and Hospice—
Fremont County**
Lander: 307-332-2922 | f. 307-332-0106
Lander@frontierhhh.com
Riverton: p. 307-856-4127 | f. 307-856-4129
Riverton@frontierhhh.com
Fremont and Hot Springs Counties*

Alaska

Frontier Home Health and Hospice—Anchorage

Colorado

Heart of the Rockies Home Health and Hospice—Salida

Idaho

St Alphonsus Home Health and Hospice—Boise

Montana

Frontier Home Health—Bozeman

Hospice of Bozeman Health—Bozeman

Frontier Home Health and Hospice—Butte

Frontier Home Health and Hospice—Helena

Frontier Hospice—Kalispell

Washington

Frontier Home Health and Hospice—Omak

www.frontierhhh.com



MEET YOUR

FREMONT

COUNTY

HOME HEALTH

AND HOSPICE

CARE TEAM

Providing skilled home health and hospice services in Fremont and Hot Springs counties

Lander: 307-332-2922

Riverton: 307-856-4127

frontierhhh.com/fremontcounty

Home Health, Hospice and Transitional/Custodial Team Members



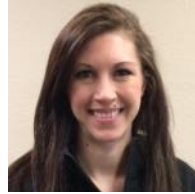
Ashley L., RN
Case Manager



Bonnie D., RN
Case Manager



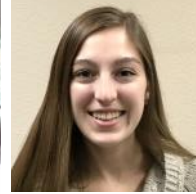
Charlotte J. RN
Case Manager



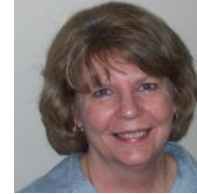
Deborah C., RN
Case Manager



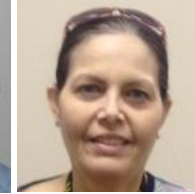
Erika C., RN
Case Manager



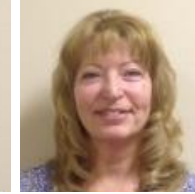
Kaylie R., RN
Case Manager



Jeanne H., RN
Case Manager



Pam T., RN
Case Manager



Sheri S., RN
Case Manager



Susan H., RN
Case Manager



Terrie D., RN
Case Manager



Cheryene F., RN



Kari G., RN



**Sara P., RN,
WOCN**

Our Customer Service Commitment:
As invited guests we are committed to providing a better-than-expected experience by recognizing and meeting individuals and treating patients and their families with respect and compassion.



Tammy B., PT
Physical Therapy



Melissa G., PTA
Physical Therapy



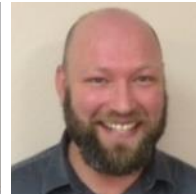
Stephanie G., PTA
Physical Therapy



Andrew V., OT
Occupational Therapy



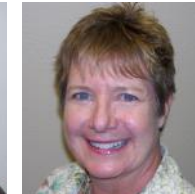
**Elizabeth H.,
LCSW Social
Worker**



Feike V.
Chaplain



Robin S.
Chaplain



Maria S.
Volunteer Coordinator



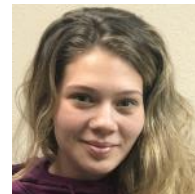
Alycia B., HHA
Lead Aide



Ethel H., HHA
Aide



Kelsey C., HHA
Aide



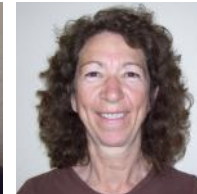
Kelsey H., HHA
Aide



**Margaret C.,
HHA Aide**



Nancy A., HHA
Aide



Salli A., HHA
Aide



**Shaylenn K.,
HHA Aide**



Sue M., HHA
Aide



Tracy W., HHA
Aide



Angel N.
Business Office



Christina L.
Business Office



Nancy W.
Business Office



Nicki P.
Business Office